



Georgia Department of Transportation



• ECONOMIC IMPACT REPORT FOR •
FULTON COUNTY AIRPORT-BROWN FIELD



September 2020

According to Site Selection Magazine, Georgia is **ranked as the #1 state** for doing business.

Georgia Airports Mean Business.

Airports in Georgia generate positive economic impacts as well as support many other sectors of local and state economies. In the summer of 2019, the Georgia Department of Transportation undertook a statewide study to estimate the annual economic impact of 102 study airports. The study estimated economic impacts for seven commercial airports and 95 general aviation airports. This report includes impacts related to **Fulton County Airport-Brown Field** and summarizes all Statewide Airport Economic Impacts.

Annual Economic Impacts for Fulton County Airport-Brown Field

Residents, businesses, and visitors benefit from the state's well-developed airport system. While supporting transportation, healthcare, tourism, and commerce, airports contribute to the economy. The Economic Impact Study identified specific economic impacts associated with the **Fulton County Airport-Brown Field** and other airport benefits. Key impacts for the **Fulton County Airport-Brown Field** follow.

- Annual Visitors **165,580**
- Employment Supported **2,089**
- Annual Payroll **\$116,744,300**
- Annual Spending **\$225,286,200**
- Annual Economic Impact **\$342,030,500**
- Airport-Supported Annual State & Local Sales & Income Tax Revenues **\$15,441,590**

Economic Impacts for Fulton County Airport-Brown Field

The table below provides information on the sources of annual economic impact estimated for the **Fulton County Airport-Brown Field**. For more information on the impacts reported here, consult the study's Technical Report available at dot.ga.gov/IS/AirportAid.

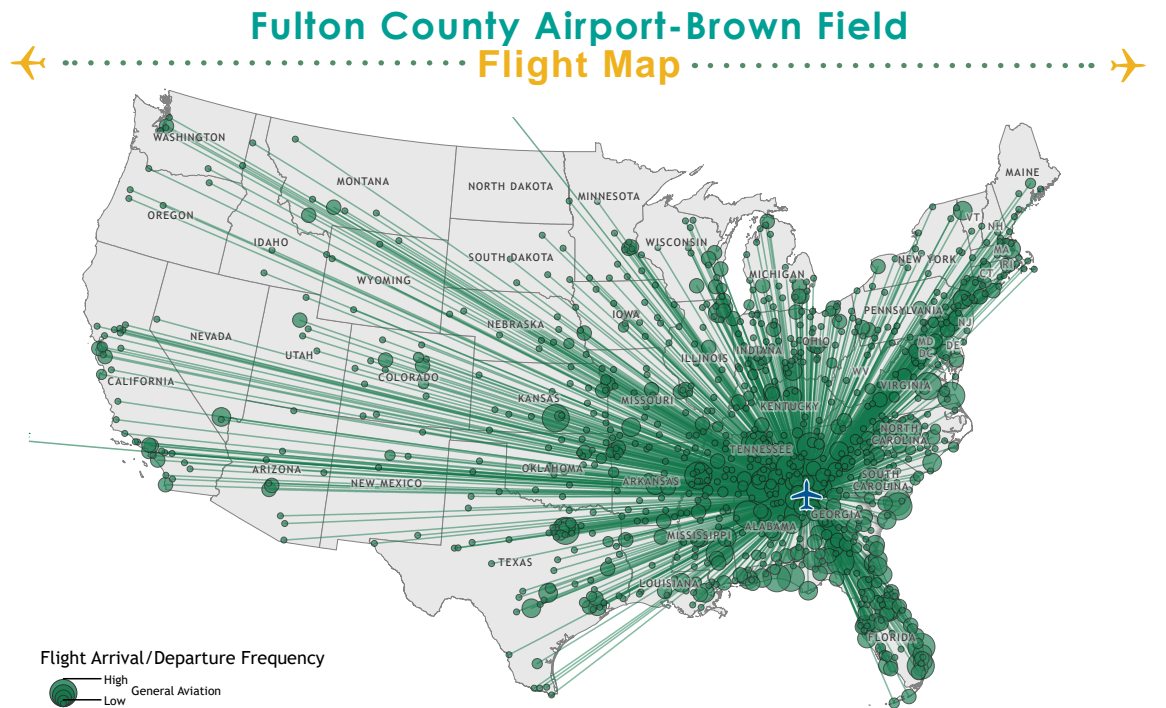
Annual Economic Impacts for Fulton County Airport-Brown Field

| | Employment | Payroll | Spending | Total Economic Activity |
|---------------------------------------|--------------|----------------------|----------------------|-------------------------|
| Airport Management & Business Tenants | 1,363 | \$96,720,000 | \$186,606,200 | \$283,326,200 |
| Capital Investment | 97 | \$3,003,500 | \$12,295,900 | \$15,299,400 |
| General Aviation Visitor Expenditures | 629 | \$17,020,800 | \$26,384,100 | \$43,404,900 |
| Total | 2,089 | \$116,744,300 | \$225,286,200 | \$342,030,500 |

Georgia Airports Support Connectivity

A flight from a Georgia airport is a gateway to over 40,000 worldwide airports, including over 19,000 airports in the US alone. When employers seek to relocate or expand, proximity to an airport is among the top 10 factors they consider in their decision making. Georgia's tourist industry also depends on the efficiency of air travel.

This map depicts destinations for flights departing from and arriving at **Fulton County Airport-Brown Field** on any given day. This information is generated from the FAA's National Offload Program (NOP). Flights represent only a fraction of all destinations that can be reached directly from the airport. The map helps to show how the airport supports the travel needs of businesses, visitors, and residents of the airport's service area.



Top Five Destinations for Fulton County Airport-Brown Field

- 1** Brunswick, Georgia
- 2** Teterboro, New Jersey
- 3** Savannah, Georgia
- 4** Columbus, Georgia
- 5** Birmingham, Alabama

Statewide Economic Impacts

Shown below are total annual statewide economic impacts. All economic impacts shown in this report for Hartsfield-Jackson Atlanta International Airport were obtained from a separate study for that airport conducted by the City of Atlanta. As shown, when all Georgia airports are considered, total annual statewide economic impacts are estimated at 450,502 jobs, \$9.2 billion in annual payroll, and \$73.7 billion in annual economic activity.

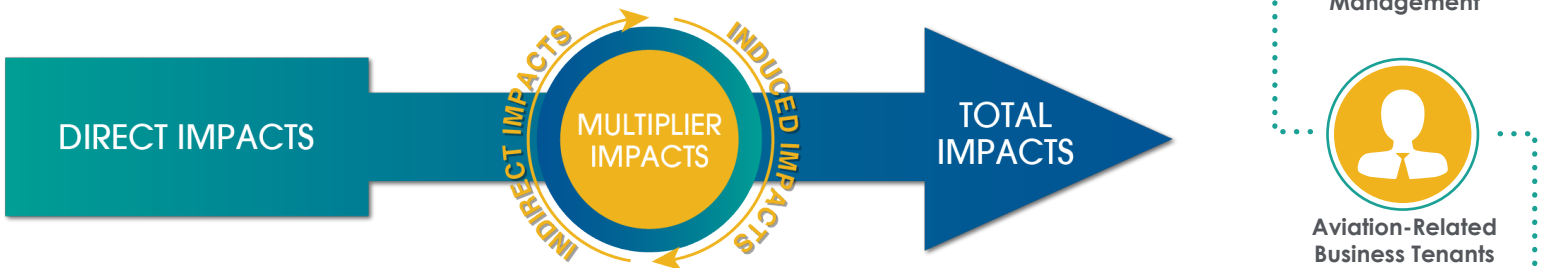
Statewide Economic Impacts All System Airports

| | Hartsfield-Jackson Atlanta International Airport* | Commercial Study Airports | General Aviation Study Airports | State Total |
|-------------------|---|---------------------------|---------------------------------|----------------|
| Employment | 383,242 | 52,376 | 14,893 | 450,502 |
| Payroll | \$16.7 billion | \$1.3 billion | \$271 million | \$9.2 billion |
| Economic Activity | \$66.8 billion | \$2.2 billion | \$828 million | \$73.7 billion |

*2016-2017 Technical Report, City of Atlanta Economic Impact Study

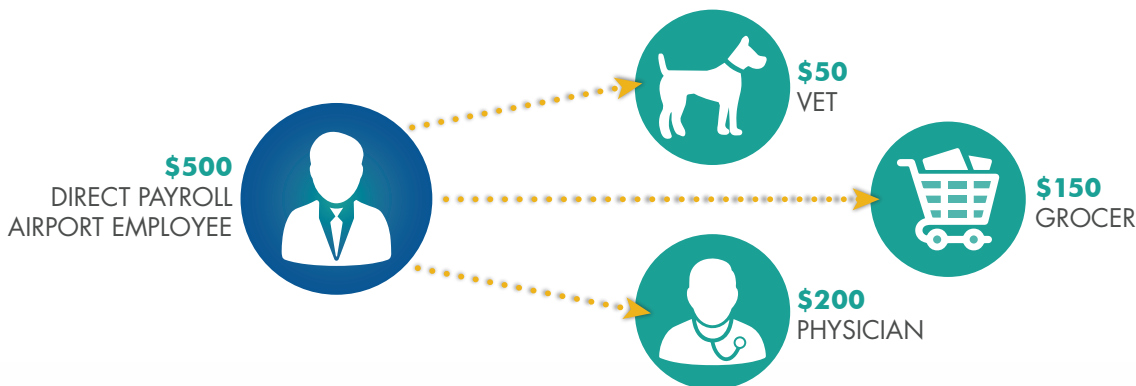
Economic Impact Categories and Measurements

The study identified impacts related to airport management (day-to-day airport operations), aviation-related business tenants, average annual capital investment, expenditures by visitors arriving on general aviation aircraft, and expenditures by visitors arriving on scheduled commercial airline flights. For each of these five categories, impacts were measured for **employment, payroll, spending, and annual economic activity**. Annual economic activity is the sum of payroll and spending. In addition, the study estimated state and local tax revenues that are generated by airport-supported activities.



Study Methodology

Data collection and survey efforts identified **direct** economic impacts in each of the five impact categories using an approved FAA methodology. A state input/output model (**IMPLAN**) was used to estimate additional **indirect and induced** impacts, sometimes referred to as multiplier impacts. Combined, direct plus indirect/induced impacts equal total state or airport specific economic impacts.



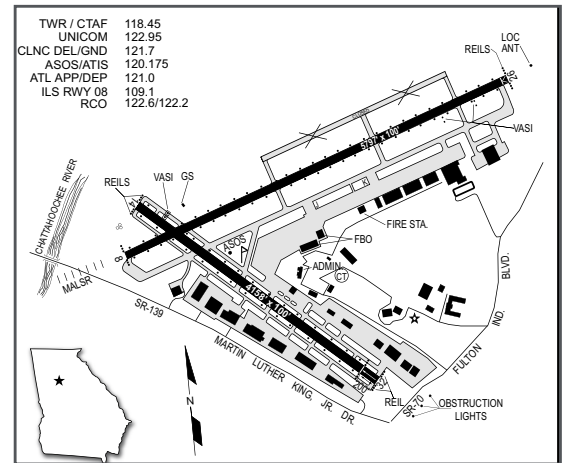
The direct impacts that start at the airport multiply within the state economy. The \$150 of direct impact spent with the grocery results in additional payroll (induced impacts) for the grocer's employees. As the grocery buys supplies, this additional business to business spending results in indirect impacts.

Visitors Arriving on Commercial Flights

Fulton County-Brown Field is located six miles west of downtown Atlanta, at the interchange of Interstates 20 and 285. With a population of over one million, Fulton County is an important hub for business, politics, higher education, healthcare, and culture. The airport plays an integral role in supporting companies requiring convenient access to the Atlanta metropolitan area.

The airport, owned and operated by Fulton County, has two paved runways, an air traffic control tower, and fire station. The primary runway, Runway 08/26, is 5,797 feet long; this runway has a full parallel taxiway and a precision instrument approach. Runway 14/32, the airport's crosswind runway, is 4,158 feet long.

Two full-service fixed base operators (FBOs), Hill Aircraft and Signature Flight Support operate at the airport. These companies provide fueling, aircraft maintenance, aircraft storage, aircraft cleaning, catering, and ground transportation. Amenities available in each of their terminal buildings include a pilot lounge, flight planning/briefing room, and internet access. The airport is the first choice for companies in the Atlanta area seeking a convenient location for their corporate flight department. Some of the larger corporate flight departments at the airport include Home Depot, Coca-Cola, Enterprise Aviation, Ice, and Cox Enterprises.



Some of the larger corporate flight departments at the airport include Home Depot, Coca-Cola, Enterprise Aviation, Ice, and Cox Enterprises.

Examples of How Fulton County Airport-Brown Field Supports its Community

There is a good chance you benefit from different activities that the airport supports. Airports support healthcare and emergency services. Airports support the state's agricultural and forestry industries, and power companies rely on airports to keep electricity flowing. State and federal agencies use airports to protect the environment, and law enforcement benefits from airports. Businesses throughout Georgia rely on airports to improve their efficiency. Examples of how the airport benefits the community follow.

Business Use: Airports are tools used by a wide variety of employers to increase many aspects of their efficiency. When businesses consider where they locate or expand, proximity to an airport is often a top consideration. Airports are also a contributor to an area's economic diversification and growth. Both local and visiting businesses rely on air travel to increase their efficiency. Airports can be used to help companies expand their market areas, reduce employee travel time, provide access for customers and suppliers, and tie together offices in multiple locations. Businesses that rely on and benefit from the airport include Home Depot, AMB Enterprises, Coca Cola, Koch Industries, Sun Trust, Georgia Pacific, Institute of Nuclear Power, Turner Enterprises, Print Pak, and Holder Construction. In addition to these users, Norfolk Southern, Sanderson Farms, Georgia Crown Distributing, Glock, Inc., Waffle House, and Tyler Perry Film Enterprises frequently use the airport. By supporting these users, the airport assists many sectors of the local economy.

Emergency/Medical Support: AirCARE1 uses the airport to fly Georgia residents in need of advanced medical care to other parts of Georgia, other areas in the United States, and in some instances, to other parts of the world. Founded by a critical care nurse, AirCARE1 enables area residents to seek out the finest medical care available. While in the air, AirCare1 provides patients with the same level of medical care that the patient receives at the best ground-based medical facilities. AirCARE1 is one of the few air ambulance and medevac providers who have earned dual accreditation, both in U.S. and European medical transport. The flight crew who transports area residents includes two highly experienced and knowledgeable air ambulance pilots; the medical staff on each flight includes a critical care nurse and either a respiratory therapist or a paramedic. AirCARE1's fleet is comprised of Lear 35A jets, and their fleet is outfitted with the most advanced medical technology available to support neonate, pediatric, geriatric, and bariatric patients. Medical support services that the airport facilitates often are unobserved but are required for urgent medical conditions.

Law Enforcement: The airport supports essential law enforcement activities. The Georgia State Patrol (GSP) Aviation Division uses the airport and operates 24/7 to provide air support for different assignments. GSP supports public safety interests for the citizens of Georgia. The GSP Aviation Division performs search and rescue missions utilizing infra-red cameras, and many missing persons have been located from the air using this technology. Other missions supported by the GSP Aviation Division include manhunts, aerial photography, aerial surveillance, natural disaster response, SWAT missions, and fire suppression. The Division has also become a nationwide leader for its innovative use of aircraft to suppress the distribution of illegal substances.

Georgia Department of Natural Resources: The Georgia Department of Natural Resources (DNR) helps to oversee state parks and historic resources, wildlife resources, law enforcement, historic preservation, environmental protection, and coastal resources throughout the state. DNR is supported by an aviation unit that uses the airport to support its missions. DNR's aviation unit flew almost 960 hours in 2019, using Georgia airports to support their missions. Almost 33 percent of their hours were flown to protect the state's waterways and woodland areas. DNR assists other agencies such as the Department of Justice, the Environmental Protection Agency, and the Federal Aviation Association.

THIS DOCUMENT WAS PREPARED BY

Jviation
900 S Broadway, Suite 350
Denver, Colorado 80209
303.524.3030
www.jviation.com

Data collection and analysis for this study took place before the onset of the COVID-19 pandemic in March 2020. Results reflect conditions at Georgia airports prior to that time.

FOR MORE INFORMATION PLEASE CONTACT

Georgia Department of Transportation Aviation Programs
600 West Peachtree Street NW
Atlanta, Georgia 30308
404.631.1990 | dot.ga.gov/IS/AirportAid
Email: aviationprograms@dot.ga.gov

